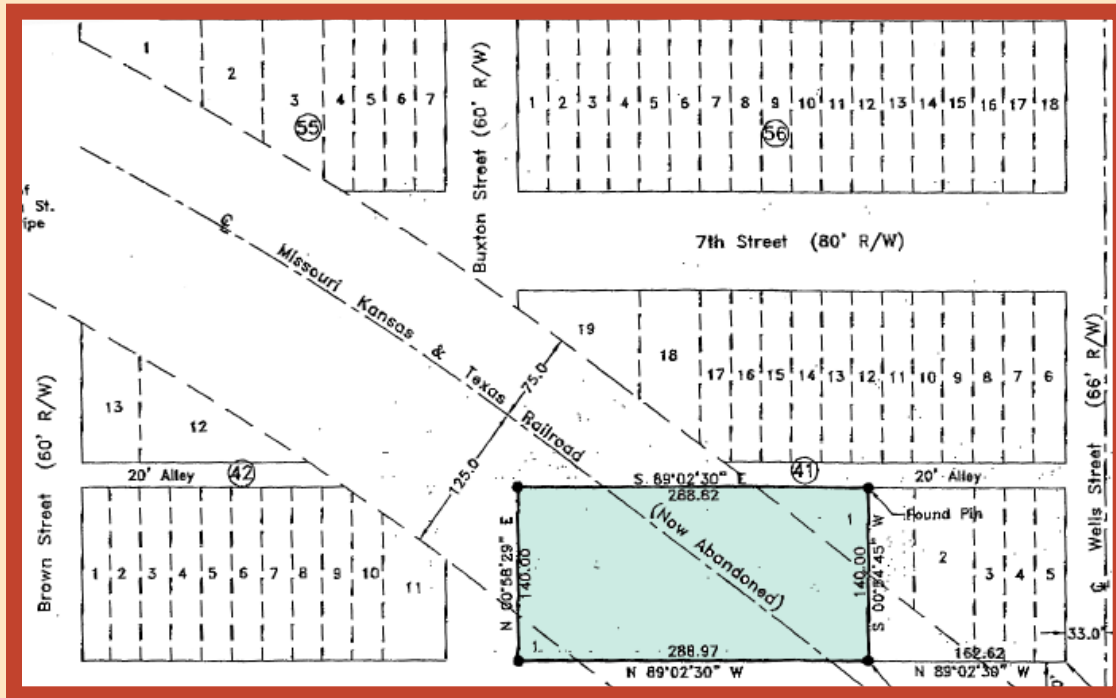


AUCTION

Thursday, March 25, 2010 – 10:00 a.m.
Vici, OK



Hwy 60 Frontage, Vici, OK

Located right on the Main East/West Highway in Vici

LEGAL: A tract in Lot 1, Blk 41, original Townsite of Vici and a part of the Abandoned Missouri, Kansas and Texas Railroad Right of Way a 288'x140' tract.

Real Estate Terms: 10% of purchase price escrowed sale day with balance due upon proof of marketable title. Seller will provide current abstract and warranty deed. Taxes prorated to day of closing. Announcements made sale day supersede all advertisements. Buyers should arrange financing and satisfy themselves with size, location and boundaries etc., prior to sale day. All information given comes from resources we believe to be reliable but in no way is guaranteed. Seller is reserving the mineral rights.

Sellers: Farmer's Coop Association of Vici



Mooreland, OK 580-994-6004 • 580-254-3975

Auctioneer – Ira Y. Smith – R.E. Broker

Member of OSAA and NAA

David Bay • Kenny Rounds • Andy Ferguson • H.Y. Smith • Buck Hutchens

See our website at smithcoauctions.com